



Leaders in
Hybrid Vegetable Seeds



SUNGRO SEEDS PVT. LTD.



About Sungro

With strong belief in its Philosophy "**BRINGING SEEDS OF PROSPERITY**" **Sungro Seeds Pvt. Ltd.**, a pioneer in Vegetable Seed Industry, is truly and completely dedicated to the service of farming community since 1973.

We have been providing the best quality seeds to the farming community as per their changing needs, using the rich experience and knowledge of more than four decades in research, production, processing and marketing of vegetable seeds. We are proud owner of 80 hybrids and 20 superior open pollinated vegetable seed products. We hold sizeable market share in hybrid Brinjal, Cauliflower, Cabbage, Cucurbits in India.

Sungro Seeds Pvt. Ltd. is a member of Barwale group of companies, the leaders in the Asian Seed Industry. We are backed with the latest technology and research and development facility of the group.

Sungro is a Research and Technology Development (R&TD) driven organization. We have revolutionized the Indian vegetable seed industry by being one of the early players to introduce and popularize Seed by Count technology in vegetable seeds.

Sungro has its network and operations spread across India and in International markets. We do our best to provide quality seeds to our customer right from the production, to harvesting, to marketing of the vegetable seeds.



Research & Development - Develops high quality seeds through plant breeding using modern techniques.



Production - We impart latest technologies and skills to the growers for quality seed material. Only best quality seed lot with highest genetic purity is selected.



Quality Assurance - Seeds are tested on various parameters to maintain high quality standards. The seed testing lab is accredited by ISTA (Mahyco).



Processing - Tested seeds are processed and packed using the latest technology.



Sales & Marketing - Sungro reaches out to the farmers across India through a robust distribution network facilitated by a dynamic sales and marketing team.

Hybrid Brinjal

NAVKIRAN



- Fruit Shape : Round
- Fruit Colour : Bright purple
- Fruit Weight : 250-300 gm
- Fruit Bearing : Solitary
- Calyx : Non spiny and green with purplish tinge
- Excellent for bharta preparation due to less seed content

PK-123



- Fruit Shape : Club shaped
- Fruit Colour : Bright purple
- Fruit Weight : 90 gm
- Fruit Bearing : Solitary
- Calyx : Green with purple tinge and non spiny
- Wide adaptability
- Performs well even in rainy season

NO. 992



- Fruit Shape : Oval to round
- Fruit Colour : Blackish purple
- Fruit Weight : 250-300 gm
- Fruit Bearing : Solitary
- Calyx : Green and non spiny
- Excellent for bharta preparation due to less seed content
- Fruit colour retention even at high temperature

NO. 33



- Fruit Shape : Long
- Fruit Colour : Shining purple
- Fruit Weight : 80-100 gm
- Fruit Bearing : Solitary
- Calyx : Green and non spiny
- Wide adaptability

NO. 143



- Fruit Shape : Round
- Fruit Colour : Pink
- Fruit Weight : 150-200 gm
- Fruit Bearing : Solitary
- Calyx : Green and Non spiny
- Good colour holding even at high temperature
- Excellent for bharta preparation due to less seed content

Black Diamond



- Fruit Shape : Long
- Fruit Colour : Shining dark purple
- Fruit Weight : 90-120 gm
- Fruit Bearing : Mixed
- Calyx : Non spiny and green with purple tinge
- High yield potential

PPL-74



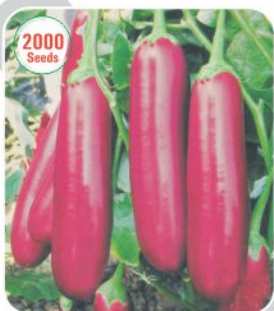
- Fruit Shape : Long cylindrical
- Fruit Colour : Dark purple
- Fruit Weight : 75-80 gm
- Fruit Bearing : Solitary
- Calyx : Green & non spiny
- Wide adaptability & heat tolerant

NO. 183



- Fruit Shape : Long
- Fruit Colour : Green
- Fruit Weight : 75-80 gm
- Fruit Bearing : Mixed
- Calyx : Green and non spiny
- Wide adaptability

NO. 704



- Fruit Shape : Ellipsoidal
- Fruit Colour : Pink
- Fruit Weight : 100-125 gm
- Fruit Bearing : Solitary
- Calyx : Green and non spiny
- Good colour retention of fruit at high temperature

NO. 38



- Fruit Shape : Oval
- Fruit Colour : Green with blotches
- Fruit Weight : 100-125 gm
- Fruit Bearing : Solitary
- Calyx : Green and non spiny
- Tolerant to bacterial wilt



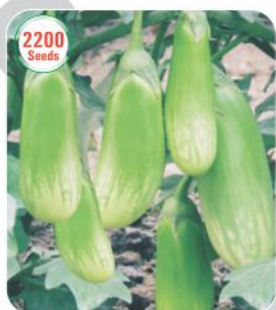
NO. 801

- Fruit Shape : Oblong
- Fruit Colour : Green with blotches
- Fruit Weight : 250-300 gm
- Fruit Bearing : Solitary
- Calyx : Green and non spiny
- Tolerant to bacterial wilt



Itisha

- Fruit Shape : Long
- Fruit Colour : Shining purple
- Fruit Weight : 80-100 gm
- Fruit Bearing : Solitary
- Calyx : Green and non spiny
- Wide adaptability



NO. 132

- Fruit Shape : Oblong
- Fruit Colour : Green with blotches
- Fruit Weight : 75 gm
- Fruit Bearing : Cluster
- Calyx : Green and non spiny
- Tolerant to bacterial wilt



Hybrid Bhindi
NO. 7777

- Plant Habit : Tall
- First Picking : 48-50 days
- Fruit Colour : Dark green
- Fruit Length : 13-15 cm
- Fruit Tenderness : Thin & tender
- High yield potential



NO. 1014

- Fruit Shape : Obovate
- Fruit Colour : Green
- Fruit Weight : 250-300 gm
- Fruit Bearing : Solitary
- Calyx : Non spiny and green
- Utility product for stuffing at younger stage and paste preparation on maturity



NO. 693

- Plant Habit : Tall
- First Picking : 45-50 days
- Fruit Colour : Dark green
- Fruit Length : 10-11 cm
- Fruit Tenderness : Thin & tender
- Tolerant to YVMV disease
- Good shelf life
- Early fruiting



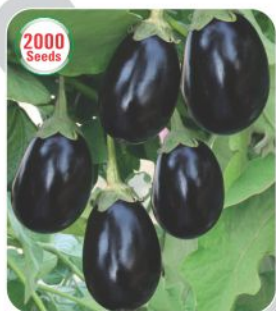
PRAGATI

- Fruit Shape : Oval
- Fruit Colour : Purple
- Fruit Weight : 45-50 gm
- Fruit Bearing : Cluster
- Calyx : Green and Non spiny
- Early fruiting
- Suitable for stuffing
- Wide adaptability



NO. 18

- Plant Habit : Tall
- First Picking : 48-50 days
- Fruit Colour : Green
- Fruit Length : 11 cm
- Fruit Tenderness : Thin & tender
- Highly tolerant to YVMV
- High yield potential



NO. 117

- Fruit Shape : Ovoid
- Fruit Colour : Shiny black
- Fruit Weight : 100-150 gm
- Fruit Bearing : Mixed
- Calyx : Non spiny green
- No color fading even in summer
- Excellent fruit firmness and keeping quality
- Absence of bitterness



NO. 237

- Plant Habit : Tall
- First Picking : 45-50 days
- Fruit Colour : Dark green
- Fruit Length : 10-11 cm
- Fruit Tenderness : Thin & tender
- Tolerant to YVMV disease
- Good shelf life
- Early fruiting



| **Latika**

- Plant Habit : Tall
- First Picking : 48-50 days
- Fruit Colour : Green
- Fruit Length : 11-12 cm
- Fruit Tenderness : Thin & tender
- Highly tolerant to YVMV
- High yield potential

Hybrid Cauliflower

| **NO. 110**



- Segment : Early spring
- Curd Colour : Creamy white
- Average Curd Weight : 750 gm
- Curd Shape : Dome
- Curd Compactness : Medium
- Self Blanching : Partial
- Suitable for growing in early spring season & summer harvest

| **NO. 2236**



- Segment : Early spring
- Curd Colour : Creamy white
- Average Curd Weight : 700-800 gm
- Curd Shape : Dome
- Curd Compactness : Medium
- Self Blanching : Partial
- Suitable for growing in early spring season & summer harvest

| **NO. 130**



- Segment : Mid
- Curd Colour : White
- Average Curd Weight : 800 gm
- Curd Shape : Dome
- Curd Compactness : High
- Self Blanching : Partial
- 7-10 day early maturity than OP kartkl and excellent curd quality

| **KATREENA**



- Segment : Mid
- Curd Colour : White
- Average Curd Weight : 800-1000 gm
- Curd Shape : Dome
- Curd Compactness : Medium
- Self Blanching : Partial
- Early maturity
- High yield potential



SWEETHEART

- Segment : Mid late
- Curd Colour : White
- Average Curd Weight : 1500-2000 gm
- Curd Shape : Dome
- Curd Compactness : High
- Self Blanching : Blanched



| **NO. 140**

- Segment : Early spring
- Curd Colour : Creamy white
- Average Curd Weight : 700-800 gm
- Curd Shape : Dome
- Curd Compactness : Medium
- Self Blanching : Partial
- Suitable for growing in early spring season & summer harvest



| **NO. 497**

- Segment : Late
- Curd Colour : Milky white
- Average Curd Weight : 1000-1500
- Curd Shape : Dome
- Curd Compactness : High
- Self Blanching : Blanched



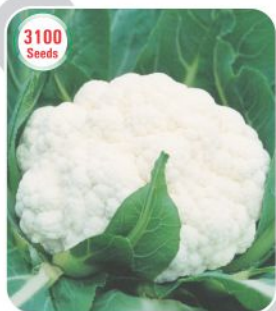
| **ANANDI**

- Segment : Late
- Curd Colour : Milky white
- Average Curd Weight : 1000-1500
- Curd Shape : Dome
- Curd Compactness : High
- Self Blanching : Highly blanched
- Wide sowing window and excellent self blanching



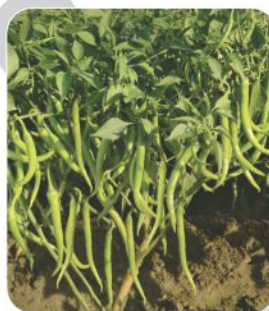
| **NO. 626**

- Segment : Extra late
- Curd Colour : Snow white
- Average Curd Weight : 1500-2000 gm
- Curd Shape : Dome
- Curd Compactness : Very high
- Self Blanching : Highly blanched



WHITE GOLD

- Segment : Extra late
- Curd Colour : White
- Average Curd Weight : 1500-2000 gm
- Curd Shape : Dome
- Curd Compactness : High
- Self Blanching : Highly blanched
- Fresh market, early harvest is possible if more dense curd is wanted



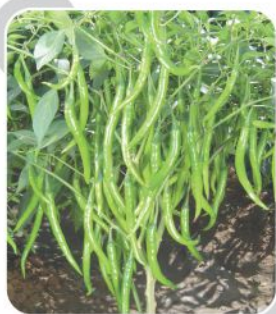
NO. 1050

- Fruit Colour : Immature-Parrot Green
Mature-Deep Red
- Fruit Length : 15-16 cm
- Fruit Diameter : 1-1.2 cm
- Fruit Habit : Pendant
- Fruit Pungency : High
- Fruit Surface : Slightly wrinkled
- Maturity (DAT) : 55-60 days
- High yield potential

Hybrid Chilli

S-415

- Fruit Colour : Immature-Green
Mature-Bright red
- Fruit Length : 12-13 cm
- Fruit Diameter : 1.3 cm
- Fruit Habit : Pendant
- Fruit Pungency : High
- Fruit Surface : Wrinkled
- Maturity (DAT) : 60-65 days
- Prolific bearer and suitable for fresh purpose



SUPER-16

- Fruit Colour : Immature-Parrot Green
Mature-Bright Red
- Fruit Length : 8-10 cm
- Fruit Diameter : 0.9-1 cm
- Fruit Habit : Pendant
- Fruit Pungency : High
- Fruit Surface : Slightly wrinkled
- Maturity (DAT) : 70-75 days
- Mild tolerance to powdery mildew disease

S-16

- Fruit Colour : Immature-Dark Green
Mature-Bright Red
- Fruit Length : 8-9 cm
- Fruit Diameter : 0.6-1 cm
- Fruit Habit : Pendant
- Fruit Pungency : High
- Fruit Surface : Slightly wrinkled
- Maturity (DAT) : 60-65 days
- High yielding hybrid



STARLITE

- Fruit Colour : Dark Green, Red
- Fruit Length : 8-10 cm
- Fruit Diameter : 0.7-0.9 cm
- Fruit Habit : Smooth
- Fruit Pungency : Very High
- Fruit Surface : Moderate Wrinkles
- Very Attractive firm fruits
- Easy Picking, Uniform length

SUNGRO WONDER

- Fruit Colour : Immature-Green
Mature-Deep Red
- Fruit Length : 14-16 cm
- Fruit Diameter : 1.3-1.4 cm
- Fruit Habit : Pendant
- Fruit Pungency : Mild
- Fruit Surface : smooth
- Maturity (DAT) : 65-70 days
- Excellent for dry purpose



NO. 746

- Fruit Colour : Immature-Green
Mature-Dark Red
- Fruit Length : 11-13 cm
- Fruit Diameter : 1.2-1.4 cm
- Fruit Habit : Pendant
- Fruit Pungency : Medium
- Fruit Surface : Smooth in fresh red &
wrinkle in dry red
- Maturity (DAT) : 65-70 days
- Major utility for dual purpose

TARJINI

- Fruit Colour : Green
- Fruit Length : 6-10 cm
- Fruit Diameter : 1.3-1.5 cm
- Fruit Habit : Smooth
- Fruit Pungency : High
- Fruit Surface : Semi Wrined
- Good Virus Tolerance



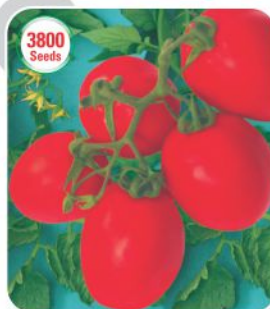
SAHANA

- Fruit Colour : Dark Green
- Fruit Length : 10-12 cm
- Fruit Diameter : 1.0-1.2 cm
- Fruit Habit : Smooth
- Fruit Pungency : High
- Fruit Surface : Slight Wrinkles
- Major Utility type : Green

Hybrid Tomato
NO. 7007



- Plant Habit : Semi determinate
- Fruit shape : Flattish round
- Fruit colour : Red
- Fruit shoulder color : White
- Fruit weight : 80 gm
- Maturity (DAT) : 75-80 days
- Disease tolerance : ToLCV
- Suitable for kharif planting



NO. 575

- Plant Habit : Determinate
- Fruit shape : Oval
- Fruit colour : Red
- Fruit shoulder colour : White
- Fruit weight : 80-90 gm
- Maturity (DAT) : 70-75 days
- Suitable for long distance transportation

NO. 3618



- Plant Habit : Semi determinate
- Fruit shape : Flattish round
- Fruit colour : Red
- Fruit shoulder color : Green
- Fruit weight : 70-80 gm
- Maturity (DAT) : 70-75 days
- Disease tolerance : ToLCV
- Fruits are sour in taste



NO. 974

- Plant Habit : Indeterminate
- Fruit shape : Round
- Fruit colour : Red & glossy
- Fruit shoulder color : White
- Fruit weight : 80-85 gm
- Maturity (DAT) : 65-75 days
- Excellent fruit firmness & high yield potential
- Suitable for long distance transportation

NO. 511



- Plant Habit : Semi Indeterminate
- Fruit shape : Flat Round Desi Fruit
- Fruit colour : Red
- Fruit shoulder colour : Light Green Color
- Fruit weight : 80-85 gm
- Maturity (DAT) : 65-70 days
- Good Transportability
- Good Shelf Life, Excellent Fruit Firmness



Hybrid Cabbage

S- 92 (IMPROVED)

- Head Shape : Round
- Head Colour : Green
- Head Compactness : High
- Head Weight : 1-1.25 kg
- FHC : >30 days
- Maturity (DAT) : 60-65 days
- Suitable for close distance planting due to small frame size

NO. 906



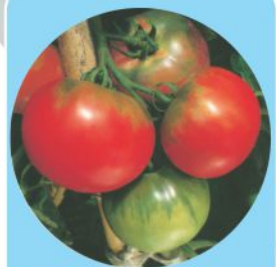
- Plant Habit : Semi determinate
- Fruit shape : Flattish round
- Fruit colour : Red
- Fruit shoulder color : White
- Fruit weight : 80-90 gm
- Maturity (DAT) : 60-70 days
- Disease tolerance : ToLCV
- Fruits are sour in taste



S- 92 (MITRA)

- Head Shape : Round
- Head Colour : Green
- Head Compactness : High
- Head Weight : 1-1.25 kg
- FHC : >30 day
- Maturity (DAT) : 60-65 days
- Suitable for close distance planting due to small frame size

S- 85

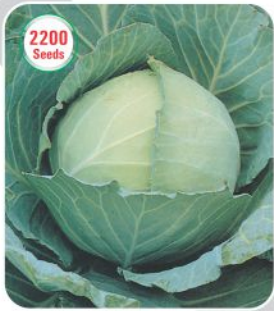


- Plant Habit : Determinate
- Fruit shape : Flattish round
- Fruit colour : Red
- Fruit shoulder color : Green
- Fruit weight : 60-70 gm
- Maturity (DAT) : 70-75 days
- Disease tolerance : ToLCV
- Suitable hybrid for OP dominated area



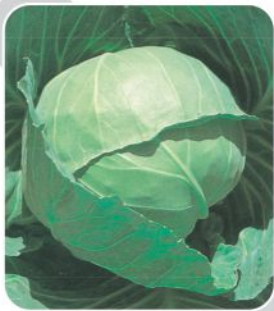
BLUE DIAMOND

- Head Shape : Round
- Head Colour : Dark green
- Head Compactness : High
- Head Weight : 1.5-1.8 kg
- FHC : >20 days
- Maturity (DAT) : 65-70 days
- Tolerant to black rot



SUNNY

- Head Shape : Round
- Head Colour : Green
- Head Compactness : High
- Head Weight : 1-1.25 kg
- FHC : >25 days
- Maturity (DAT) : 65-70 days
- Tolerant to black rot
- Suitable for distant transportation



S-996

- Head Shape : Round
- Head Colour : Emerald green
- Head Compactness : High
- Head Weight : 1-1.5 kg
- FHC : >20 days
- Maturity (DAT) : 65-70 days
- Excellent quality heads with high yield



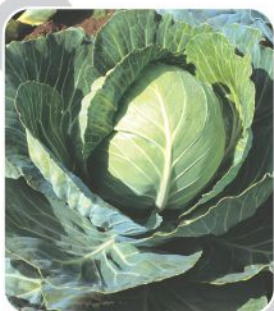
NO. 5005

- Head Shape : Round
- Head Colour : Emerald green
- Head Compactness : Medium
- Head Weight : 0.8-1 kg
- FHC : >10 days
- Maturity (DAT) : 50-55 days
- Early maturity
- Suitable for fresh market



NO. 5024

- Head Shape : Round
- Head Colour : Dark green
- Head Compactness : High
- Head Weight : 1.25-1.5 kg
- FHC : >15 days
- Maturity (DAT) : 60-65 days
- Compact head



SUNGRO BALL

- Head Shape : Round
- Head Colour : Fresh green
- Head Compactness : High
- Head Weight : 1.5-2 kg
- FHC : >20 days
- Maturity (DAT) : 70-75 days
- Compact head



NO. 5024

- Head Shape : Round
- Head Colour : Dark green
- Head Compactness : High
- Head Weight : 1.25-1.5 kg
- FHC : >15 days
- Maturity (DAT) : 60-65 days
- Compact head



Hybrid Cucumber MALAV

- Fruit Colour : Green
- Fruit Length : 19 cm
- Fruit Girth : 15 cm
- Fruit Weight : 180 gm
- Fruit Surface : Medium thorny
- Maturity : 50 days
- Crispy fruits
- Good bearing and excellent shelf life



SAKSHI

- Fruit Colour : Whitish green
- Fruit Length : 15 cm
- Fruit Girth : 15 cm
- Fruit Weight : 120 gm
- Fruit Surface : Smooth
- Maturity : 50 days
- Excellent bearing capacity



SAMBHAR

- Fruit Colour : Mottled green fruit with yellowish green stripes
- Fruit Length : 25-27 cm
- Fruit Girth : 40 cm
- Fruit Weight : 1250 gm
- Fruit Surface : Smooth
- Maturity : 70-75 days
- Excellent bearing capacity



Hybrid Ashgourd DRISHTI

- Fruit Shape : Round
- Fruit Skin Colour : Green with wax coating on maturity
- Fruit Flesh Colour : Milky white
- Fruit Weight : 2.5-3.5 kg
- Maturity : 100-110 days
- Excellent bearing
- High yielding capacity



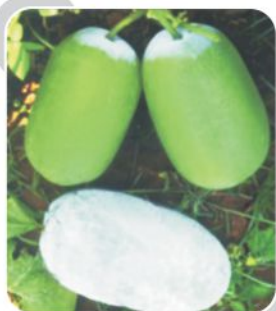
NO. 600

- Fruit Shape : Oblong
- Fruit Skin Colour : Green with wax coating on maturity
- Fruit Flesh Colour : Milky white
- Fruit Weight : 5-6 kg
- Maturity : 110-130 days
- High yield potential



NANHA

- Fruit Shape : Short spindle
- Fruit Colour : Dark green
- Fruit Length : 7-8 cm
- Fruit Girth : 8-9 cm
- Fruit Weight : 50-60 gm
- Toothing : Very good
- Maturity : 50-55 days
- Early maturity
- High yield potential



NO. 700

- Fruit Shape : Oblong
- Fruit Skin Colour : Light green with wax coating on maturity
- Fruit Flesh Colour : Milky white
- Fruit Weight : 7-8 kg
- Maturity : 120-140 days
- Wide adaptability
- High yield potential



NO. 165

- Fruit Shape : Slender
- Fruit Colour : Dark green
- Fruit Length : 22 cm
- Fruit Girth : 16 cm
- Fruit Weight : 80-85 gm
- Toothing : Very good
- Maturity : 55-60 days
- High yield potential



Hybrid Bittergourd

VIVEK

- Fruit Shape : Spindle
- Fruit Colour : Dark green
- Fruit Length : 22 cm
- Fruit Girth : 16 cm
- Fruit Weight : 80-85 gm
- Toothing : Medium
- Maturity : 55-60 days
- Excellent bearing



NO. 601

- Fruit Shape : Slender
- Fruit Colour : Dark green
- Fruit Length : 35-40 cm
- Fruit Girth : 16 cm
- Fruit Weight : 80-100 gm
- Toothing : Very good
- Maturity : 55-60 days
- High yield potential



NAYAN

- Fruit Shape : Slender
- Fruit Colour : Dark green
- Fruit Length : 25-30 cm
- Fruit Girth : 14 cm
- Fruit Weight : 100-125 gm
- Toothing : Very good
- Maturity : 55-60 days
- Uniform fruit size
- Excellent bearing



Hybrid Bottlegourd

PRATIMA

- Fruit Shape : Cylindrical
- Fruit Colour : Attractive green
- Fruit Length : 35-40 cm
- Fruit Weight : 850-1000 gm
- Maturity : 50-55 days
- Suitable for long distance transportation
- Wide adaptability
- High yield potential



AMAN

- Fruit Shape : Spindle
- Fruit Colour : Dark green
- Fruit Length : 18-20 cm
- Fruit Girth : 16 cm
- Fruit Weight : 100-110 gm
- Toothing : Slight
- Maturity : 55-60 days
- Excellent bearing



VIDYA

- Fruit Shape : Long cylindrical
- Fruit Colour : Green
- Fruit Length : 40-45 cm
- Fruit Weight : 1000-1400 gm
- Maturity : 70-75 days
- Excellent plant vigour
- High bearing



SWATI

- Fruit Shape : Cylindrical
- Fruit Colour : Light green
- Fruit Length : 45-60 cm
- Fruit Weight : 1200-1500 gm
- Maturity : 70-75 days
- Suitable for long distance transportation
- Wide adaptability
- High yield potential



NAV NUTAN

- Fruit Shape : Thin long
- Fruit Colour : Light green with white seeds
- Fruit Length : 30 cm
- Fruit Weight : 125 gm
- Maturity : 38-40 days
- Early maturity and good yield potential
- Moderate tolerance to mildew



Hybrid Ridgegourd PALLAVI

- Fruit Shape : Long & slender
- Fruit Colour : Green with prominent ridges
- Fruit Length : 40-45 cm
- Fruit Weight : 130-150 gm
- Maturity : 40-45 days
- Good keeping quality
- Wide adaptability
- High yield potential



Hybrid Snakegourd ANMOL

- Fruit Shape : Long slender with tapering ends
- Fruit Colour : Milky white with white stripes
- Fruit Girth : 20-25 cm
- Fruit Length : 35-40 cm
- Fruit Weight : 250-300 gm
- Maturity : 55-60 days
- Suitable for long distance transportation



GAURAV

- Fruit Shape : Long & slender
- Fruit Colour : Dark green with prominent ridges
- Fruit Length : 45 cm
- Fruit Weight : 200-250 gm
- Maturity : 45 days
- Good keeping quality
- Wide adaptability
- High yield potential



Hybrid Pumpkin CHAKOR

- Fruit Shape : Oblong
- Fruit Skin Colour : Yellowish green
- Fruit Flesh Colour : Orange yellow
- Fruit Weight : 7-8 kg
- Maturity : 100-110 days
- Suitable for long distance transportation



Hybrid Spongegourd NUTAN

- Fruit Shape : Long & thin
- Fruit Colour : Dark green
- Fruit Length : 28-30 cm
- Fruit Weight : 130-150 gm
- Maturity : 43-48 days
- Good keeping quality
- Wide adaptability
- High yield potential



NO. 111

- Fruit Shape : Flattish round
- Fruit Skin Colour : Mottled Light green
- Fruit Flesh Colour : Light yellow
- Fruit Weight : 3.5-4.5 kg
- Maturity : 80-90 days
- Thick flesh and suitable for long distance transportation



701

- Fruit Shape : Long & thin
- Fruit Colour : Attractive green
- Fruit Length : 28-30 cm
- Fruit Weight : 130-150 gm
- Maturity : 43-48 days (very Early)
- Prolific bearing
- Good yield potential



SURYA

- Fruit Shape : Flattish round
- Fruit Skin Colour : Mottled green
- Fruit Flesh Colour : Deep orange
- Fruit Weight : 2.5 kg
- Maturity : 85-90 days
- Suitable for long distance transportation
- Wide adaptability

Hybrid Radish



R-33

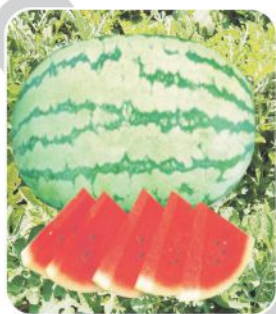
- Root Shape : Cylindrical tapering
- Root Length : 28-30 cm
- Root Surface : Smooth white
- Root Flesh & Pungency : Crispy & mild pungent
- Maturity : 30-35 days
- Uniform maturity
- Suitable for march to July sowing
- Suitable for inter cropping
- Desirable foliage

Hybrid Watermelon



SUPER CHAMPION

- Fruit Shape : Oblong
- Fruit Rind Colour : Green with dark green stripes
- Fruit Flesh Colour : Dark red
- Fruit Weight : 10-11 kg
- TSS % : 12-13 brix
- Maturity : 75-80 days
- Suitable for long distance transportation
- High yield potential



NO. 786

- Fruit Shape : Oval to oblong
- Fruit Rind Colour : Light green with dark green stripes
- Fruit Flesh Colour : Crimson red
- Fruit Weight : 10-12 kg
- TSS % : 11-12 brix
- Maturity : 80-85 days
- Suitable for long distance transportation
- High yield potential

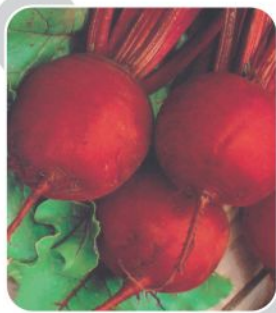
Hybrid Carrot



NO. 404

- Root Shape : Tapering
- Root Length : 30-35 cm
- Root Colour : Red
- Core : Small & self coloured
- Maturity : 90-95 days
- Uniform maturity
- Uniform shape and size
- Sweet taste

Hybrid Beetroot



CASTELO

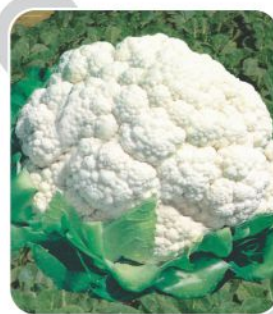
- Root Shape : Round
- Root Colour : Deep red
- Root Flesh Colour : Blood red
- Root Weight : 75-80 gm
- Maturity : 80-85 days
- Very smooth root surface
- Uniform flesh without white rings
- Very Sweet in taste

Superior Open Pollinated Varieties



CAULIFLOWER HIMRANI

- Segment : Late
- Curd Colour : White
- Average Curd Weight : 800-1000 gm
- Curd Shape : Dome
- Curd Compactness : Medium
- Self Blanching : Blanched
- Early and uniform maturity



CAULIFLOWER KALAPATTA

- Segment : Extra late
- Curd Colour : White
- Average Curd Weight : 1000-1250 gm
- Curd Shape : Dome
- Curd Compactness : High
- Self Blanching : Blanched
- Excellent curd quality



CRYSTAL

- Root Shape : Round
- Root Colour : Deep red
- Root Flesh Colour : Blood red
- Root Weight : 75-80 gm
- Maturity : 80-85 days
- Very smooth root surface



RADISH CHINESE PINK

- Root Shape : Stump rooted
- Root Length : 20-25 cm
- Root Colour : Pinkish red
- Maturity : 55 Days
- Root Pithiness : Late



RADISH HILL QUEEN

- Root Shape : Cylindrical tapering
- Root Length : 35-40 cm
- Root Colour : White
- Maturity : 40 Days
- Root Pithiness : Late



RADISH PUSA CHETKI

- Root Shape : Cylindrical tapering
- Root Length : 30-35 cm
- Root Colour : Pure white
- Maturity : 40-45 days
- Root Pithiness : Late



DESI RED

- Root Shape : Tapering
- Root Length : 25-30 cm
- Root Colour : Red
- Core : Small & self coloured
- Maturity : 80-90 days
- Earliness, high yield



CARROT SUPER RED

- Root Shape : Tapering
- Root Length : 25-30 cm
- Root Colour : Deep red
- Core : Small & self coloured
- Maturity : 80-90 days
- Earliness, uniform shape & size

mahyco
grow

SUNGRO SEEDS PVT. LTD.

An ISO 9001 : 2008 Certified Company

Registered Office:

9, Raj Mahal,
84 Veer Nariman Road,
Mumbai - 400020

CIN-U74999MH1991PTC061969

E-mail : customercare@sungroseed.com

Website : www.sungroseed.com

Disclaimer :

The product pictures & information given in the catalogue are intended to represent the kind only and based on our research farm trials which may vary as per external factors.

